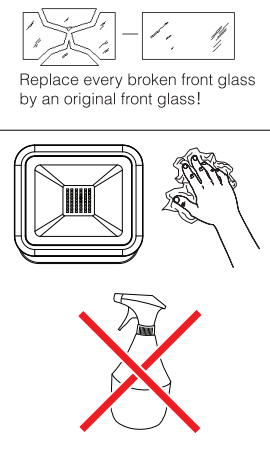


Content	Dimensions	Inrush current	Beam 10W	Beam 10W Sensor	
<p>1x 1x</p>		Driver			
		Inrush current I _{peak} (A)	4.8	4.8	Input voltage 230V
		Inrush current T _{width} (μs)	0.6	0.6	Input voltage 230V, measured at 50% I _{peak}
		Driver	Beam 20W	Beam 20W Sensor	
		Inrush current I _{peak} (A)	1.28	1.28	Input voltage 230V
		Inrush current T _{width} (μs)	1	1	Input voltage 230V, measured at 50% I _{peak}
		Driver	Beam 30W	Beam 30W Sensor	
		Inrush current I _{peak} (A)	5.6	5.6	Input voltage 230V
		Inrush current T _{width} (μs)	0.8	0.8	Input voltage 230V, measured at 50% I _{peak}
		Driver	Beam 50W	Beam 50W Sensor	
		Inrush current I _{peak} (A)	32	32	Input voltage 230V
		Inrush current T _{width} (μs)	1.2	1.2	Input voltage 230V, measured at 50% I _{peak}

EAN	W	lm	K	R _a	T _a (°C)	Vac	Hz	kg	IP	CLASS	H	L1	L2	A1	A2	D1	D2
8719157004411	10	830	3000	>80	-20...+40	220-240V	50/60Hz	0.44	65	II	139	152	42	54	74	8	6
8719157004428	10	830	3000	>80	-20...+40	220-240V	50/60Hz	0.52	65	II	185	152	65	54	74	8	6
8719157004435	10	900	4000	>80	-20...+40	220-240V	50/60Hz	0.44	65	II	139	152	42	54	74	8	6
8719157004442	10	900	4000	>80	-20...+40	220-240V	50/60Hz	0.52	65	II	185	152	65	54	74	8	6
8719157004459	20	1600	3000	>80	-20...+40	220-240V	50/60Hz	0.52	65	I	139	152	42	54	74	8	6
8719157004466	20	1600	3000	>80	-20...+40	220-240V	50/60Hz	0.60	65	I	185	152	65	54	74	8	6
8719157004473	20	1800	4000	>80	-20...+40	220-240V	50/60Hz	0.52	65	I	139	152	42	54	74	8	6
8719157004480	20	1800	4000	>80	-20...+40	220-240V	50/60Hz	0.60	65	I	185	152	65	54	74	8	6
8719157004497	30	2500	3000	>80	-20...+40	220-240V	50/60Hz	0.75	65	I	156	174	54	54	74	8	6
8719157004503	30	2500	3000	>80	-20...+40	220-240V	50/60Hz	0.81	65	I	207	174	69	54	74	8	6
8719157004510	30	2900	4000	>80	-20...+40	220-240V	50/60Hz	0.75	65	I	156	174	54	54	74	8	6
8719157004527	30	2900	4000	>80	-20...+40	220-240V	50/60Hz	0.81	65	I	207	174	69	54	74	8	6
8719157008167	50	4000	3000	>80	-20...+40	220-240V	50/60Hz	1.39	65	I	220	225	54	105	137	8	11
8719157008174	50	4000	3000	>80	-20...+40	220-240V	50/60Hz	1.5	65	I	283	225	66	105	137	8	11
8719157008181	50	4300	4000	>80	-20...+40	220-240V	50/60Hz	1.39	65	I	220	225	54	105	137	8	11
8719157008198	50	4300	4000	>80	-20...+40	220-240V	50/60Hz	1.5	65	I	283	225	66	105	137	8	11



1

Not included

EN Install the screws (not provided) on a sound surface and perfectly anchored to carry the weight. **NL** Installeer de schroeven (niet meegeleverd) op een gezonde ondergrond en perfect verankerd om het gewicht te dragen. **DE** Installiert den Schrauben (nicht mitgeliefert) auf einer soliden Oberfläche verankert und perfekt, um das Gewicht zu tragen. **FR** Installez des vis (non fourni) sur une surface solide et parfaitement ancrée à supporter le poids. **ES** Instale los tornillos (no incluido) en una superficie sólida y perfectamente anclado para soportar el peso.

2

Wiring scheme A

Blue: N
Brown: L

Wiring scheme B

Green-Yellow: PE
Blue: N
Brown: L

Position

Sensor controller

1. Sensitivity adjustment. The SENS on the cap of the product is the switch of the Sensitivity. When you turn to the smallest arrow direction, the sensitivity is the lowest. When you turn to the biggest arrow direction, the sensitivity is the highest.
2. Time adjustment. The TIME on the cap is the switch of time adjustment. When you turn to the small arrow direction, the time delay is 10sec. plus or minus 3sec short. When you turn to the big arrow direction, the time delay is 10min. plus or minus 3min. long. Remarks: the working time delay will continuously superpose. When it receives signal of second time after the first time, the time delay will recount based on the previous rest time.
3. Lux adjustment. The LUX on the cap is the switch of it. When you turn to the smallest arrow direction, that is the moon direction, the product only works below 5LUX. When you turn to the bigger arrow direction, that is the sun direction, the product can work both in the daytime and at night

EN The luminaire shall be installed and maintained by a qualified electrician, in accordance with the national regulations in each country. The luminaire contains no replaceable parts. In case of the luminaire is damaged, it shall be exclusively replaced by the manufacturer or authorized dealer. Keep the operating manual for later use. The manufacturer is not responsible for the incorrect use and assembly of this product. **NL** De armatuur dient te worden geïnstalleerd en onderhouden door een erkend installateur, in overeenstemming met de nationale regelgeving in het betreffende land. De armatuur bevat geen vervangbare onderdelen. Indien de armatuur is beschadigd dient deze enkel te worden vervangen door de fabrikant of door een erkende dealer. Bewaar de handleiding voor later gebruik. De fabrikant is niet verantwoordelijk voor onjuist gebruik en/of installatie van dit product. **DE** Die Leuchte muss von einem qualifizierten Elektriker gemäß den nationalen Vorschriften in jedem Land installiert und gewartet werden. Die Leuchte enthält keine austauschbaren Teile. Falls die Leuchte beschädigt ist, wird sie ausschließlich durch den Hersteller oder den autorisierten Händler ersetzt. Bewahren Sie die Bedienungsanleitung für spätere Verwendung auf. Der Hersteller ist nicht verantwortlich für die unsachgemäße Verwendung und Montage dieses Produktes. **FR** Le luminaire doit être installé et entretenu par un électricien qualifié, conformément à la réglementation nationale de chaque pays. Le luminaire ne contient pas de pièces remplaçables. Dans le cas où le luminaire est endommagé, il doit être remplacé exclusivement par le fabricant ou le revendeur agréé. Conservez le mode d'emploi pour une utilisation ultérieure. Le fabricant n'est pas responsable de l'utilisation et du montage incorrects de ce produit. **IT** L'apparecchio deve essere installato e mantenuto da un elettricista qualificato seguendo le normative nazionali di riferimento. L'apparecchio non contiene parti sostituibili. In caso di rottura sarà sostituito esclusivamente dal produttore o da un rivenditore autorizzato. Conservate il manuale di installazione per eventuali utilizzi successivi. Il produttore non è responsabile per l'utilizzo ed il montaggio non corretto di tale apparecchio. **ES** La luminaria debe de ser instalada y mantenida por un electricista cualificado, siguiendo las regulaciones nacionales de cada país. La luminaria contiene partes no reemplazables. En el caso de que la luminaria sea dañada, deberá ser reemplazada exclusivamente por el fabricante o distribuidor autorizado. Guarde el manual para usos posteriores. El fabricante no es responsable por el uso e instalación incorrecta de este producto.